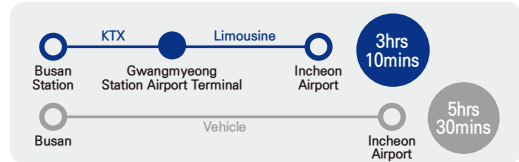


8 Advantages of Gwangmyeong Station City Airport Terminal



Advantages 01 Cut Travel Time

Compared to vehicles, passengers coming from non-capital area(Gwangju/Busan) can save time from 1.5 to 2hrs to get to Incheon Int. airport



Advantages 02 Enjoy Combined(KTX+Limousine) Service

You can buy KTX+Limousine together through either application(Korail Talk) or ticket office

When buying KTX+Limousine together, You can get a 20% discount on Limousine fare

Advantages 03 Get Early Check-in & Select Better Seat

Use early check-in service, and choose seats you prefer

Advantages 04 Save Your Time by Fast Immigration

Passengers can go through departure process without queuing in Incheon airport.

After finishing immigration at GwangMyeong Station City Airport Terminal, You will have more time for taking rest or shopping at duty free shops after simple immigration examination at Incheon airport

Advantages 05 Use Luggage Check-in

Check your baggage at GwangMyeong City Airport Terminal and pick this up at your final destination Airport

Advantages 06 Hop on First-Class Limousine(50mins)

Comfortable non-stop journey with top class limousine
Free Wi-fi, USB Power Port



Advantages 07 Save Your Time by Using Designated Entrance

Eligible to use designated departure entrance (for diplomats / flight attendants) at Incheon Airport

Simple immigration at Priority Fast Lane

Advantages 08 Have Fun!

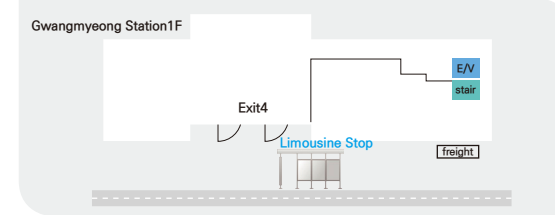
More free time at Incheon Airport before boarding for shopping at duty free or having some teas!

Limousine Stops / Ticket Offices / Designated Entrance

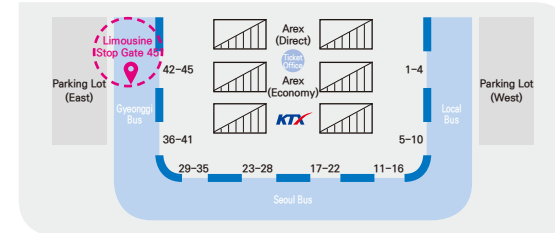


Where to Board

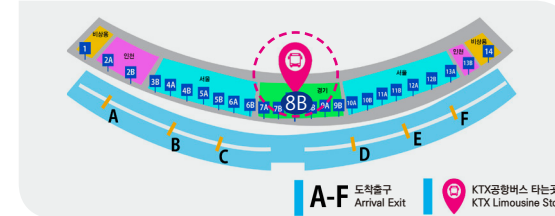
Gwangmyeong Station Gwangmyeong Station Exit4 KTX Limousine Stop



Incheon Airport Terminal 2 B1 Gate 45



Incheon Airport Terminal 1 Arrival 1F Gate 8B

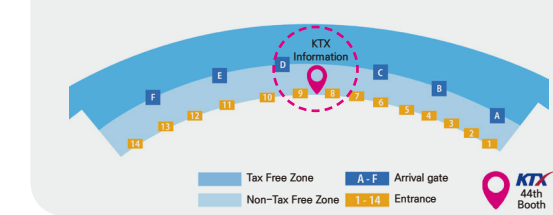


Songdo Int. Bridge KTX Limousine Stop(Incheon→Gwangmyeong)

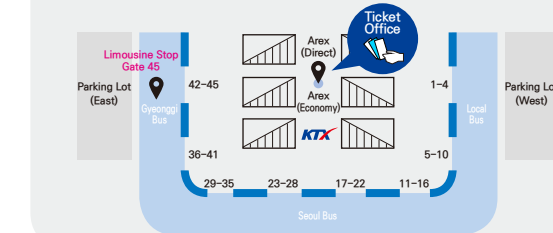


Incheon Airport Ticket Office

Incheon Airport Terminal 1 Arrival 1F Booth 44th

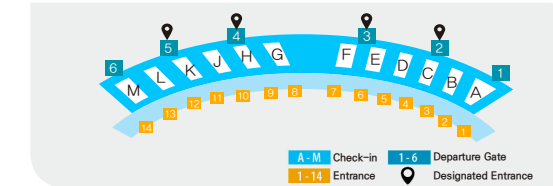


Incheon Airport Terminal 2 B1 Information Center

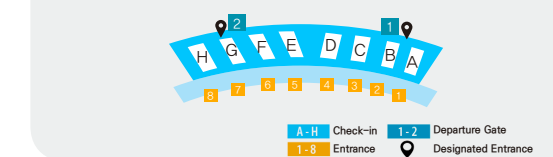


Incheon Airport Designated Entrance

Incheon airport terminal 1 Departure 3F (3-5 Designated Entrance)



Incheon airport terminal 2 Departure 3F (1~2 Designated Entrance)



The fastest way to Incheon airport
Quick, Convenient, Composure

GwangMyeong Station City Airport Terminal Guide Book



Gwangmyeong Station City Airport Terminal One-stop Service



Quick



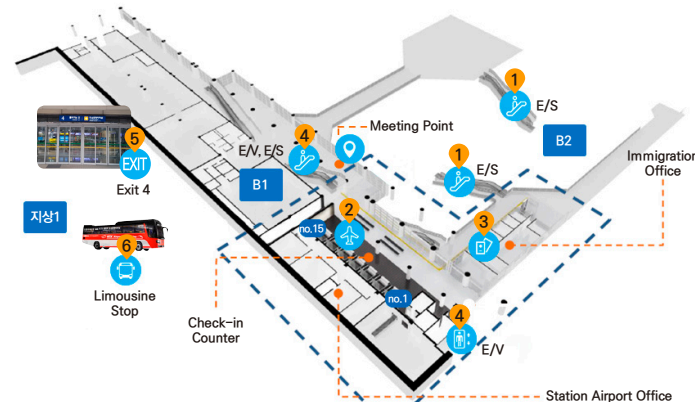
Convenient



Composure



Incheon International Airport



51km 50mins(T1)

STEP 6 Boarding
KTX Airport Limousine (Direct)

STEP 4 Escalator / Elevator

STEP 2 Check-in Counter
(Boarding Pass Issuance, Luggage Check-in)

Airlines available for Check-in

Airlines	Main Contact	Airport Contact Number
Korean Air	1588-2001	032-742-7654
Asiana Airlines	1588-8000	032-744-2135
Jeju Air	1599-1500	1599-1500
Tway Airlines	1688-8686	02-6250-5915
Air Seoul	1800-8100	032-744-6534
Jin Air	1600-6200	032-743-1508
Eastar Jet	1544-0080	070-8660-8175



At Gwangmyeong Station City Airport Terminal
You Need 10 Minutes Only For Boarding Pass Issuance, Luggage Check-in and Immigration Inspection

At Incheon International Airport
You Will Use Designated Entrance

Comparison of Required Time

Travelling from BUSAN / South Gyeongsang Province



Travelling from GWANGJU / South Jeolla Province



Compared to using vehicles, when using Gwangmyeong station airport terminal, travelers from Busan area can save time more than 2hrs, Meanwhile travelers from Gwangju area save time at least 1hr 10mins, up to 1hr 40mins

Check-in



Business hours 06:30~19:00

※ Passengers using Gwangmyeong Station Airport terminal should arrive at least 3hrs before flight departure
※ all air routes available (including routes to the U.S.)

Luggage Check-in Passengers can find their luggage at the arrival airport (not at Incheon Airport)

Departure Immigration



Business hours 07:00~19:00

Departure Immigration After check-in, You can get Immigration at Gwangmyeong Station Airport Terminal

※ In case you don't leave Korea after immigration, due to personal reasons, You must report to immigration office either at Incheon airport or at Gwangmyeong station city airport terminal

KTX Airport Limousine Bus



Operation hours

towards Gwangmyeong 06:10~22:20
towards Incheon Airport 05:20~21:00

Service Frequency 20~30mins
Bus Number 6770

Seat Management first come, first served basis

Bus type 27 seats Limousine

Route towards Gwangmyeong Incheon Airport(T1,T2) → Gwangmyeong Station
towards Incheon Airport Gwangmyeong Station Song-do Int. Bridge → Incheon Airport(T1,T2)

Tickets You can buy KTX Airport Limousine tickets on smartphone app(korailTalk), ticket office, pay by transportation card on the bus.

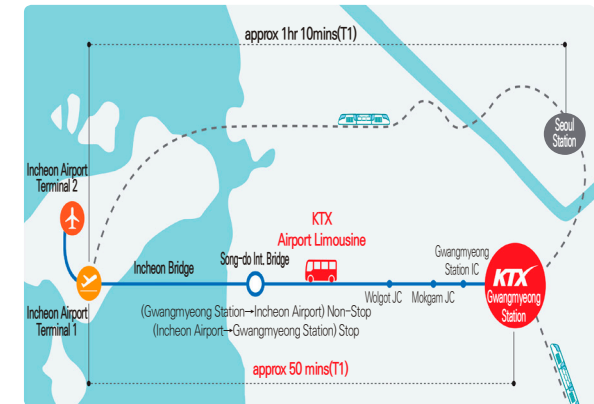
Tip

- 20% Discount provided for those who purchase combined tickets(KTX+KTX Airport Limousine)
- Free Wi-fi Password **korail6770**

KTX Services at Gwangmyeong Station(Daily)

Gyeongju, Gyeongjeon, Donghae 117 times / Honam 46 times / Jeonra 25 times

KTX Airport Limousine Route(Gwangmyeong↔Incheon)



Gwangmyeong Station Transport Links

KTX Shuttle (Gwangmyeong Station↔Sadang Station)



Route KTX Gwangmyeong Station-Sadang(2,4line)
Required time 15~20mins
Bus Number 8507
Reduced Travel Time 1hr → 15~20mins
※ The shuttle for Sadang via Seoul National University Station

Subway Shuttle(Gwangmyeong Station ↔ Yeongdeungpo Station)



Route Gwangmyeong Station-Yeongdeungpo Station
Required time 19mins
Service Frequency 40 times(Round Trip)

Gwangmyeong Station City Airport Terminal

Office hour 06:30~19:00 ☎02-3397-8151

B2

B1

G

KTX Gwangmyeong Station
(Close to Car No. 12, 13, 14)